



FLEXIHEAT UK LTD
www.flexiheatuk.com
01202 822221

FHMWOH 17-33 kW

Manual Fired Multi-Oil Heater

The FHMWOH 17-33 heater combines medium and high power output thanks to a wide range of operations

Power regulation consists of smoothly increasing or decreasing the revolutions of the fuel feeding pump. Burning takes place evenly, regardless of the thickness of the oil. A high-precision, low speed gear fuel pump, specially designed for our devices, taking into account the specific conditions of use, pumps and oil, regardless of its density. Thanks to this, you do not have to check the thickness of the oil at your disposal, and you do not have to remember to select the appropriate operating mode - the pump installed in our devices pumps both thick used oils, and thinner used oils, as well as thinner heating oils and their mixtures

MODEL DESCRIPTION

- Smooth power regulation from 17kW to 33kW
- Heater protection against overheating
- Protection against overflow of the furnace
- LED's signalling operation or possible emergency stop of combustion
- Built-in control thermostat (the fan turns off in the shutdown function of the heater when the temperature drops below 40°C within the combustion chamber)
- Thermostatic pump operation supervision
- Durable housing covered with a powder coating
- Combustion chamber made of steel with increased temperature resistance (acid-resistant steel)
- 50 Litre tank
- Manual ignition
- An outlet panel with a hot air blower on the front wall, heat radiation in all directions
- Completely pure heat
- Hot air outlet temperature 50-70°C (at air temperature inside the room about 12°C)
- Blowing 1000m³/h of warm air

MAIN FEATURES

Combustion chamber

The combustion chamber is made of stainless steel, while the furnace bowl is made of cast iron

Fuel filler

The fuel inlet is designed in such a way as to easily and quickly add fuel, without fear of flooding the controller or larger contaminants getting into the tank. The easy-to-remove filter allows you to clean it efficiently

Overflow protection

Thanks to a more sensitive microwitch, the new, improved system prevents oil from overflowing in to the combustion chamber

Automation

Improved device electronics. Now, you do not have to wonder what voltage you have in the network because in our latest controller, we have used a voltage stabilization system. Over-voltage protection increases the service life of the controller. The FHMTM17-33 heater is equipped with an adjustment knob and two buttons that allow the user to control the heater's operation and LED's indicating the heater's operating status combined with an acoustic signal in the event of a failure

High thermal efficiency

The FHMTM17-33 heater effectively heats rooms with a capacity of up to 800m³ (with good building insulation)

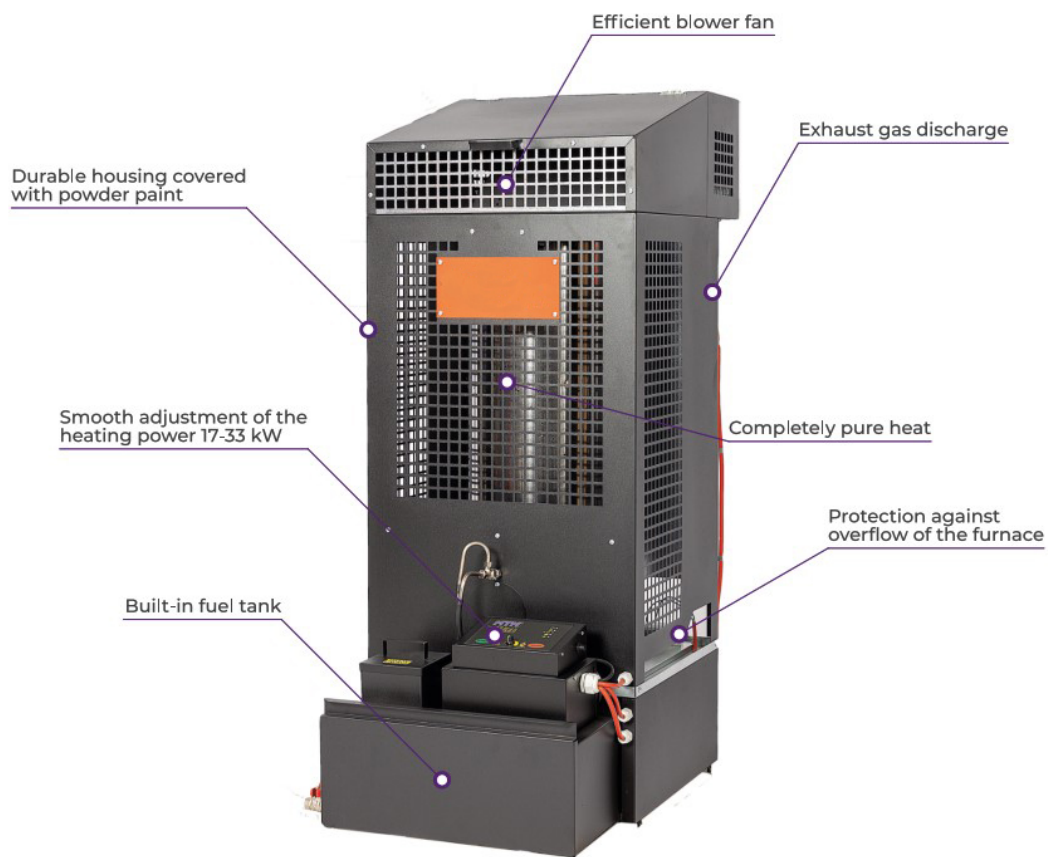
Types of fuel that may be used

- Plant oils (Biofuels)
- raw vegetable oils (Rapeseed, Sunflower and other oils) including post-frying (Gastronomy)
- Mineral Oils (used engine, gear hydraulic and diesel oils of HBO I, II, III type with a viscosity not higher than SAE80), heating oil

| Model | FHMWOH 17-33 |
|--------------------------------|------------------|
| Heating power (kW) | 17 - 33 |
| Airflow (m³/h) | 1000 |
| Oil consumption (l/h) | 1.7 - 3.3 |
| Power (V/Hz) | 230/50 |
| Power consumption (w) | 190 |
| Flue diameter (mm) | 150 |
| Heater dimensions (HxWxL) (mm) | 1390 x 580 x 870 |
| Weight (kg) | 90 |



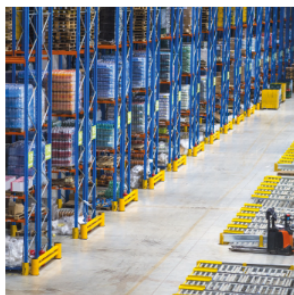
FLEXIHEAT UK LTD
www.flexiheatuk.com
01202 822221



EXAMPLE PURPOSE:



**CAR
WORKSHOPS**



WAREHOUSES



PRODUCTION



**VEHICLE CHECK
STATIONS**



FLEXIHEAT UK LTD
www.flexiheatuk.com
01202 822221

FHMWOH 30-52 kW

Manual Fired Multi-Oil Heater

The FHMWOH 30-52 heater combines medium and high power output thanks to a wide range of operations

Power regulation consists of smoothly increasing or decreasing the revolutions of the fuel feeding pump. Burning takes place evenly, regardless of the thickness of the oil. A high-precision, low speed gear fuel pump, specially designed for our devices, taking into account the specific conditions of use, pumps and oil, regardless of its density. Thanks to this, you do not have to check the thickness of the oil at your disposal, and you do not have to remember to select the appropriate operating mode - the pump installed in our devices pumps both thick used oils, and thinner used oils, as well as thinner heating oils and their mixtures

The fuel inlet is designed in such a way as to easily and quickly add fuel, without fear of flooding the controller or larger contaminants getting into the tank. The easy-to-remove filter allows you to clean it efficiently

Improved device electronics. Now, you do not have to wonder what voltage you have in the network because in our latest controller, we have used a voltage stabilization system. Over-voltage protection increases the service life of the controller

MAIN FEATURES

Closed combustion chamber

The FHMWOH 30-52 heater has a closed combustion chamber with an additional oxygenerating fan and the possibility of drawing air from another room or from outside. Thanks to this solution, the heater can work in spaces with slightly increased dustiness, eg. Paint preparation plants and extraction machines that create negative pressure

The combustion chamber is made of stainless steel, while the furnace bowl is made of cast iron

High thermal efficiency

The FHMWOH 30-52 heater effectively heats rooms with a capacity of up to 1500m³ (with good building insulation)

Overflow protection

Thanks to a more sensitive microwitch, the new, improved system prevents oil from overflowing in to the combustion chamber

Control panel

The FHMWOH 30-52 heater is equipped with an adjustment knob and two buttons that allow the user to control the heater's operation and LED's indicating the heater's operating status combined with an acoustic signal in the event of a failure

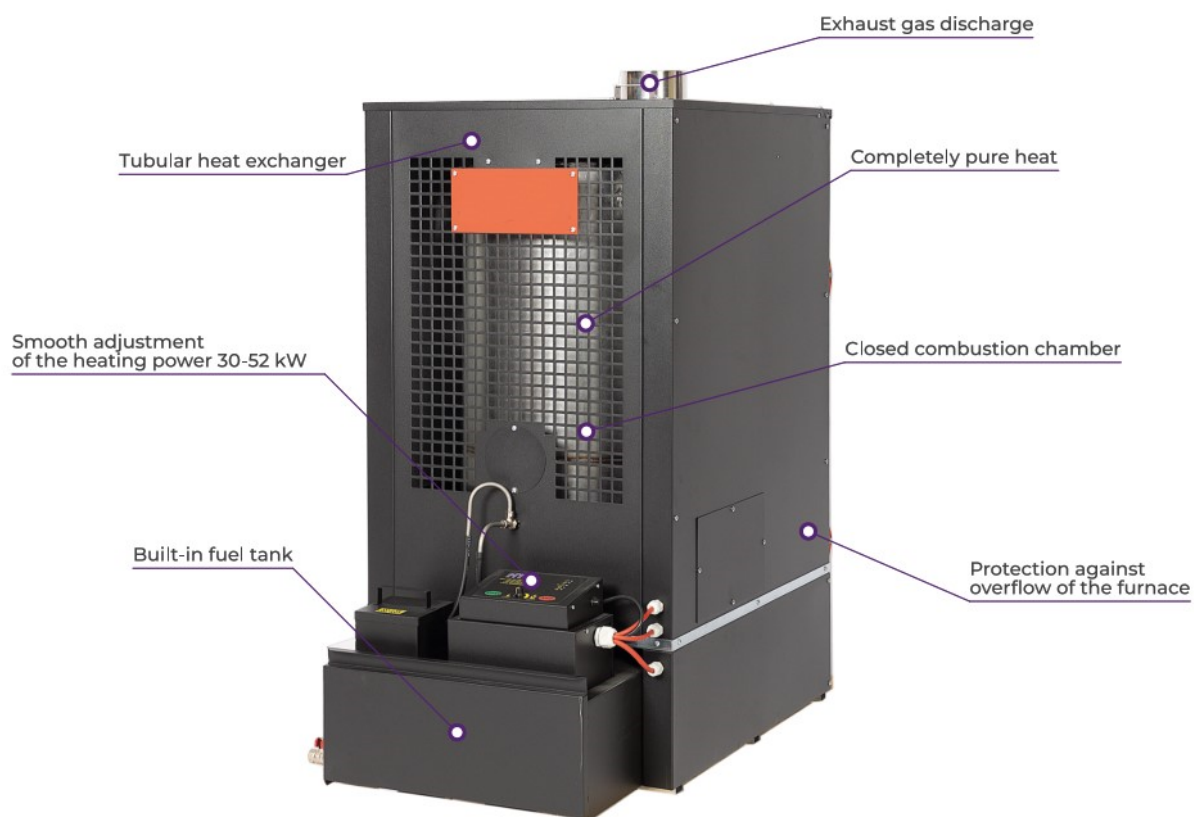
Types of fuel that may be used

- Plant oils (Biofuels)
- raw vegetable oils (Rapeseed, Sunflower and other oils) including post-frying (Gastronomy)
- Mineral Oils (used engine, gear hydraulic and diesel oils of HBO I, II, III type with a viscosity not higher than SAE80), heating oil

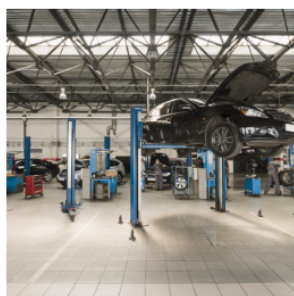
| Model | FHMWOH 30-52 |
|--------------------------------|-------------------|
| Heating power (kW) | 30 - 52 |
| Airflow (m ³ /h) | 5,500 |
| Oil consumption (l/h) | 3.0 - 5.2 |
| Power (V/Hz) | 230/50 |
| Power consumption (w) | 300 |
| Flue diameter (mm) | 150 |
| Heater dimensions (HxWxL) (mm) | 1300 x 600 x 1200 |
| Weight (kg) | 120 |



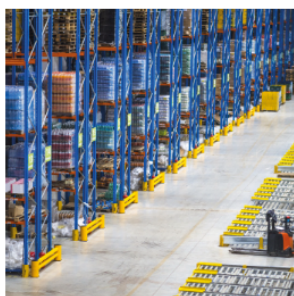
FLEXIHEAT UK LTD
www.flexiheatuk.com
01202 822221



EXAMPLE PURPOSE:



**CAR
WORKSHOPS**



WAREHOUSES



PRODUCTION



**VEHICLE CHECK
STATIONS**