



FLEXIHEAT UK LTD
www.flexiheatuk.com
01202 822221

Airstream

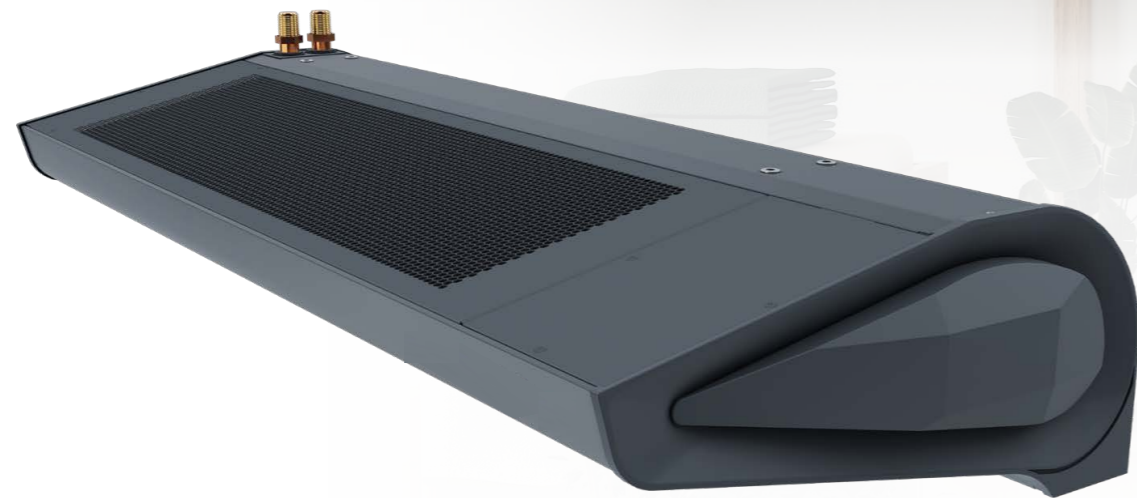
AIR CURTAIN



Airstream

YOUR INVISIBLE BARRIER

Airstream the next generation air curtain created from a passion for a light and modern design representing characteristics of gliders.



Unique shape

A minimal casing with a streamlined form of a wing that seems to float in the air. The diamond style side panels hide the excellent components in an innovative curtain body to set new standards for air curtains. **AIRSTREAM** combines the unique design and excellent efficiency to redefine the air curtain image.

Quality and design

High quality materials, unique shape and rigid construction are the basic assumptions of the designers of the curtain. Simple cleaning of the curtain, double protective coating and efficient and durable EC motor ensure trouble-free operation of the device.

Energy efficiency

- » highly efficient EC motor
- » maximum unit efficiency even at reduced speed
- » smooth speed regulation
- » optimal fan shape and EC motor let save up to 40% of energy





HMI WiFi Controller

- » modern and compact design
- » high contrast and clear screen
- » advanced calendar for each day of the week
- » door sensor cooperation
- » wireless communication with a smartphone
- » preset 3-levels speed control
- » build-in thermostat
- » 3-levels of heating power
- » up to 8 air curtains connected with the one controller



DOOR OPTIMUM function

Door Optimum function allows the *Airstream* to maintain full protection of the door opening and at the same time optimize costs associated with its operation. It keeps the air curtain operating at minimum speed and continues to protect the door, from the outside air, once the door begins opening it also increases the speed of air by +1 or +2 levels, depending on user's preferences.

Product range

Airstream **W**

WATER HEAT EXCHANGER

HEATING POWER RANGE:
4 – 47 kW

EXHAUST FLOW RATE:
1850-4400 m³/h

MAXIMUM AIR COVERAGE:
3.7 m

AIRSTREAM 100/150/200



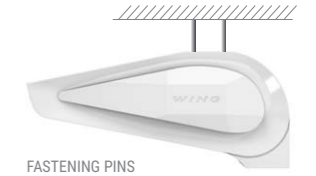
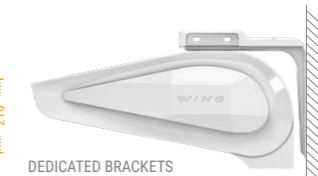
Airstream **E**

ELECTRIC HEATER

HEATING POWER RANGE:
2 – 15 kW

EXHAUST FLOW RATE:
1850-4500 m³/h

MAXIMUM AIR COVERAGE:
3.7 m



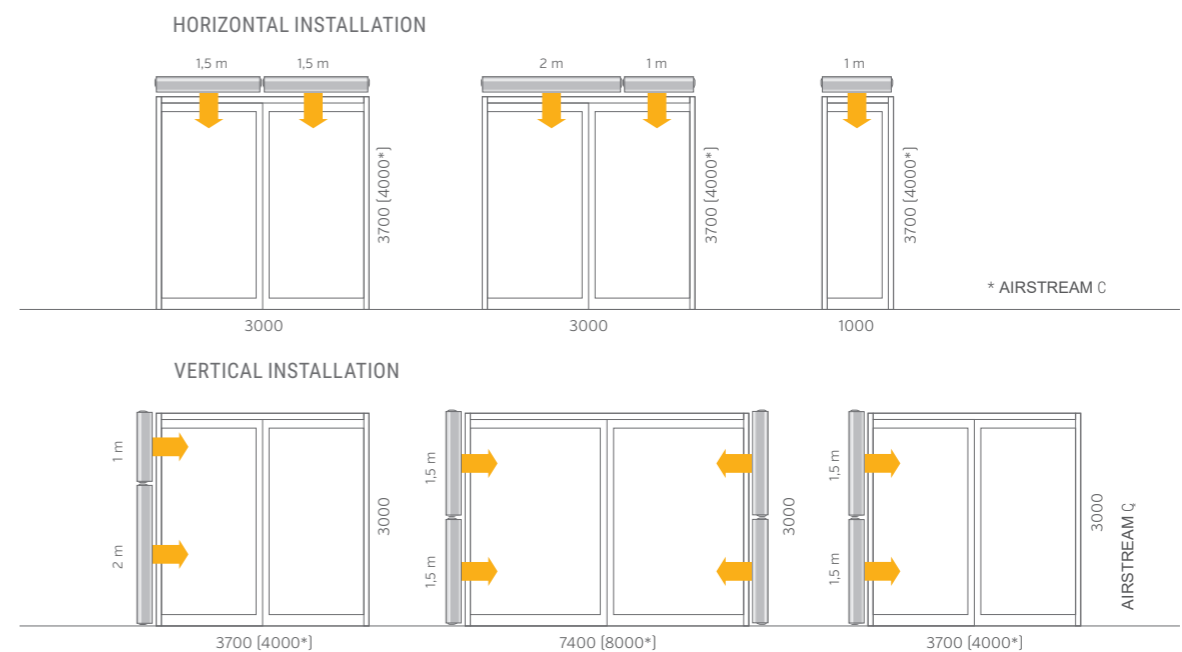
* width does not include side covers

Airstream **C**

WITHOUT HEAT EXCHANGER [AMBIENT]

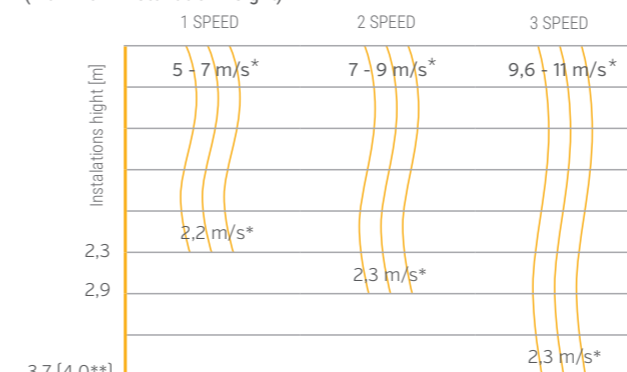
EXHAUST FLOW RATE:
4 m

EXHAUST FLOW RATE:
1950-4600 m³/h



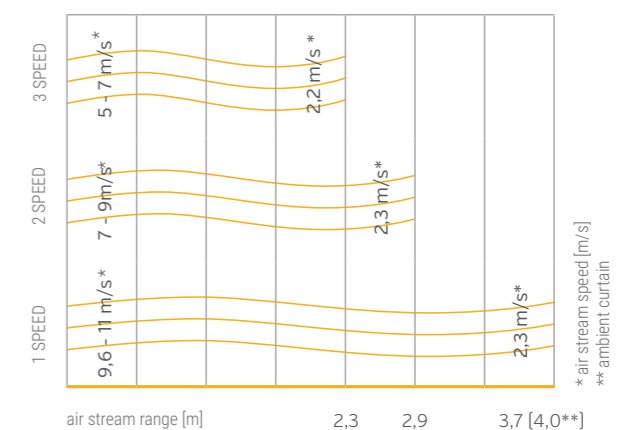
Stream range

Vertical air stream range
(maximum installation height)



* air stream speed [m/s]
** ambient curtain

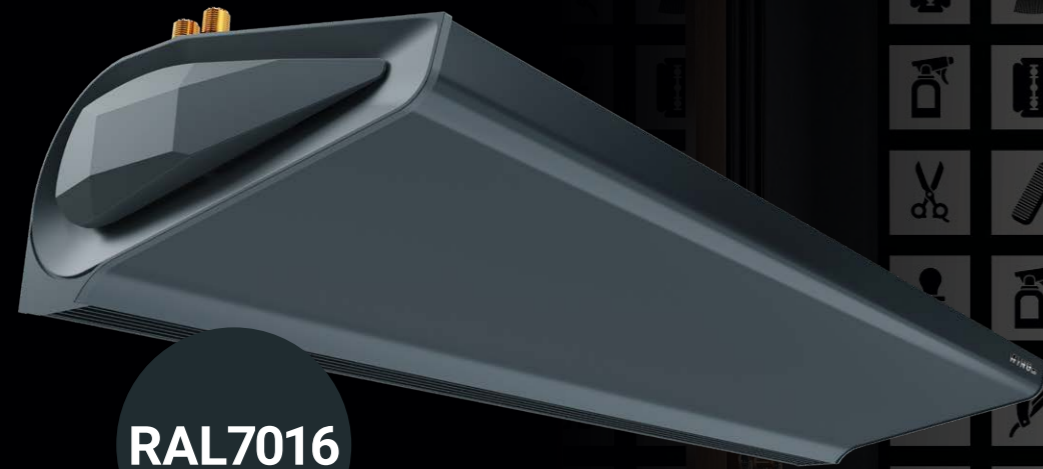
Horizontal air stream range
(for vertical installation)



* air stream speed [m/s]
** ambient curtain

Airstream

YOUR INVISIBLE BARRIER



RAL7016

NO MORE COMPROMISES

The colour RAL7016 is currently the most commonly used colour in the residential construction industry. Colour will no longer stand in the way of the designer's vision. Airstream DARK RAL7016 will effectively complement roof, doors, windows and gates.

Technical parameters

PARAMETERS	WATER AIR CURTAIN						ELECTRIC AIR CURTAIN						AMBIENT AIR CURTAIN							
	W100		W150		W200		E100		E150		E200		C100		C150		C200			
	AC	EC	AC	EC	AC	EC	AC	EC	AC	EC	AC	EC	AC	EC	AC	EC	AC	EC		
Colour	○ WHITE (RAL 9016) ● DARK (RAL 7016)																			
maximum door width (1 device)	m		1		1.5		2		1		1.5		2		1		1.5		2	
maximum door height (vertical stream range)*	m		3.7		3.7		4		-		-		-		-		-		-	
maximum exhaust flow rate	m³/h		1850		3100		4400		1850		3150		4500		1950		3200		4600	
heating power output range**	kW		4-17		10-32		17-47		2 Or 4/6		8/12		10/15		-		-		-	
maximum temperature of heating agent °C	°C		95		-		-		-		-		-		-		-		-	
maximum operating pressure	Bar		16		-		-		-		-		-		-		-		-	
water volume	dm³		1.6		2.6		3.6		-		-		-		-		-		-	
number of heat exchanger rows	pcs.		2		-		-		-		-		-		-		-		-	
supply voltage	V/ph/Hz		~ 230V/1/50		~230V/1/50 for 2kW ~400V/3/50 for 4/6kW		~400V/3/50		~230V/1/50		-		-		-		-		-	
electric heating coil power	kW		-		2 and 4		4 and 8		5 and 10		-		-		-		-		-	
electric heating coil current draw	A		-		6/max.9		11.5/max.17.3		14.5/max.21.4		-		-		-		-		-	
motor power	kW		0.235	0.2	0.375	0.3	0.58	0.47	0.235	0.2	0.375	0.3	0.58	0.47	0.235	0.2	0.375	0.3	0.58	0.47
rated current	A		1.2	1.1	1.7	1.3	2.6	1.9	1.2	1.1	1.7	1.3	2.6	1.9	1.2	1.1	1.7	1.3	2.6	1.9
weight (without water)	kg		20.8	21.2	27.8	24.5	34.6	30.4	20	17.3	26.8	23.4	33.3	29.1	17.9	15.3	23.8	20.4	29.3	25.1
protection rating	IP		20		20		20		20		20		20		20		20		20	



Smart entrance protection

INSIDE

OUTSIDE

- ← CHILLED AIR
- ← CLEAN AIR

- WARM AIR
- DUST
- INSECTS
- POLLUTION
- UNPLEASANT SCENTS

Accessories



HMI EC controller

Controller EC WIFI

Wall controller

Door sensor (reed switch)

Door sensor adapter AC

Valve with actuator

Flex. connection hoses (set)

Part No.	1428010155	Part No.	1428010156	Part No.	1401010438	Part No.	1401010454	Part No.	1401010578	Part No.	1212042019	Part No.	1227020076
Motor support	EC	Motor support	EC	Motor support	AC	Contact configuration	NO	Power supply	~230V/1ph /50Hz	Power supply	~230V/1ph /50Hz	Lenght	0,6-0,9 m
Power supply voltage	~230V/1ph /50Hz	Power supply voltage	~230V/1ph /50Hz	Power supply voltage	6(3) V/ph/Hz	Switching current	500 mA	Rated input power	1W	Opening	3/3 min	Connection type	GW 3/4"
Permissible load	1A for 230VAC 0.02A for 0-10V	Permissible load	1A for 230VAC 0.02A for 0-10V	Permissible load	1A for 230VAC 0.02A for 0-10V	Switching voltage	max 200 V	Protection rating	IP 55	Kvs	4,5	Max. fluid pressure	1,6 MPa
Setting range	5...40 °C	Setting range	5...40 °C	Setting range	10...30 °C	Connection	screw	Dedicated to curtains with AC motor. Adapter gives possibility to use Door sensor (1401010454) with Wall controller (1401010438).	Protection rating	IP 54	Min. working temperature for water	5 °C	
Protection rating	IP 20	Protection rating	IP 20	Protection rating	IP 30						Min. working temperature for glycol	-20 °C	
											Max. working temperature	130 °C	
											Set includes	hose (2 pcs) gasket (4 pcs)	

Noise level

Fan speed	Noise level	AIRSTREAM W100-200			AIRSTREAM E100-200			AIRSTREAM C100-200		
		1m	1,5m	2m	1m	1,5m	2m	1m	1,5m	2m
I	dB(A)***	52	53	56	49	51	55	53	54	57
II		55	58	61	51	56	59	59	62	61
III		57	59	62	58	58	60	62	63	63

* air stream range depends on curtain operation speed

** available heating power in the control option configuration: AIRSTREAM E100 2 or 4/6kW, for AIRSTREAM E150 8/12kW, for AIRSTREAM E200 10/15kW

*** speed measurement conditions: semi-open space, horizontal installation on the wall, measurement performed 5 m away from the device