



FHACH



Economical and comfortable solution
to protect door openings

Gas Air Curtains - FACH series is specially elaborated to protect the room against uncontrolled external airflow through the doors or building openings. It helps to save energy which is used for keeping a desired temperature in the building.

TYPICAL APPLICATION



Industries



Stores



Workshops

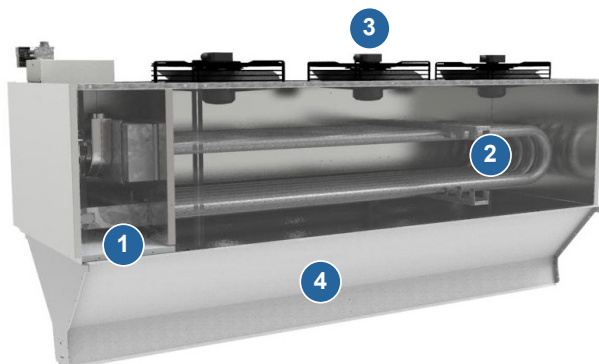


Warehouses

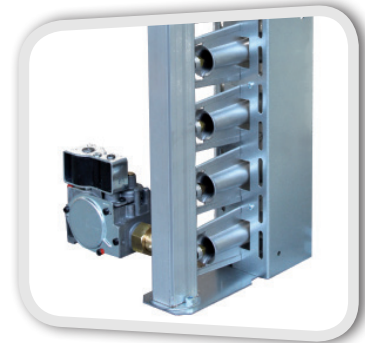
Gas Air Curtain

Gas-fired air curtain FACH is composed of a tubular heat exchanger and a multi-jet gas burner which works with natural gas (G20/G25) or propane gas (G31). The range includes models of 44 kW. FHACH are used to protect doors from 3 till 5 meters.

Product advantages	Customer benefits
Multi-jet gas burner	Homogenous flame and temperature Not sensitive to pressure variations
1.5 mm thickness heat exchanger in aluminized steel, no welding	Efficient heat exchange Long life service
Compact device	Easy and simple assembly
Efficient air blast	Strong thermal barrier to avoid outside airflow to come inside
Pilot wire card (in standard)	Regulation of several devices by one thermostat
Automatic security system	Safe use
Reset button on the thermostat	Easy use
Heating or Ventilation	Use in summer and winter time



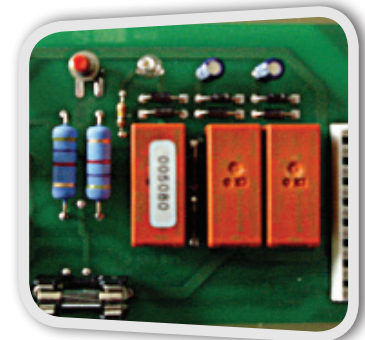
- ❶ Multi-jet gas burner
- ❷ Tubular heat exchanger
- ❸ Axial fans
- ❹ Diffuser



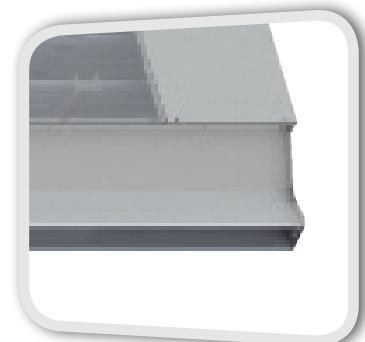
[Multi-jet gas burner]



[Tubular heat exchanger]



[Pilot wire]



[Diffuser]

FHACH

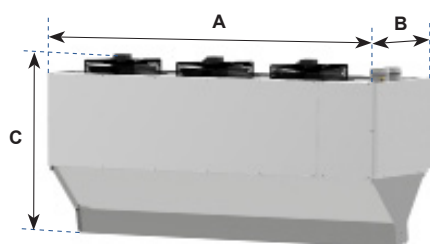


Performances

Model	FHAC 45 H
Power (kW)	44
Useful power (kW)	40.5
Efficiency (%)	> 91
Air flow (m ³ /h)	10 500
Installation height (m) *	3-5

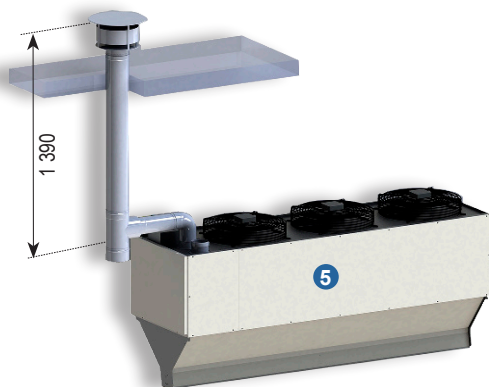
* It is necessary to check and control all parameters in order to install the right air curtain on the right place.

Dimensions

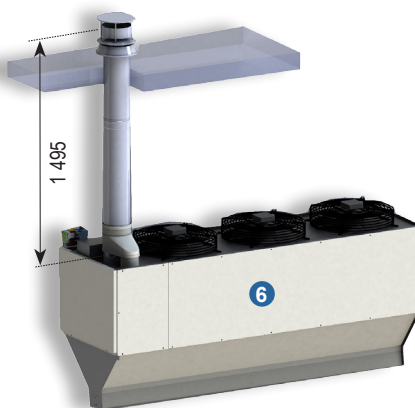


Model	FHAC 45 H
A (mm)	1 977
B (mm)	609
C (mm)	1 000
Ø Gas (mm)	3/4"
Ø Fumes (mm)	100
Ø Air (mm)	100
Weight (kg)	173

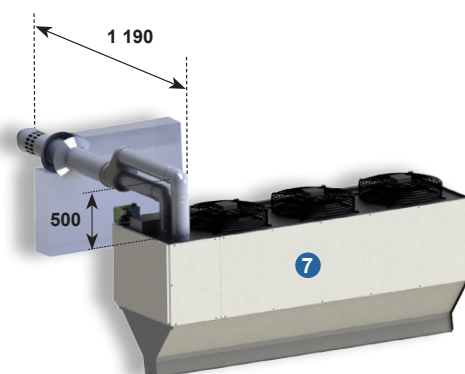
Flue connections



Sealed roof chimney B22



Concentric roof duct C32



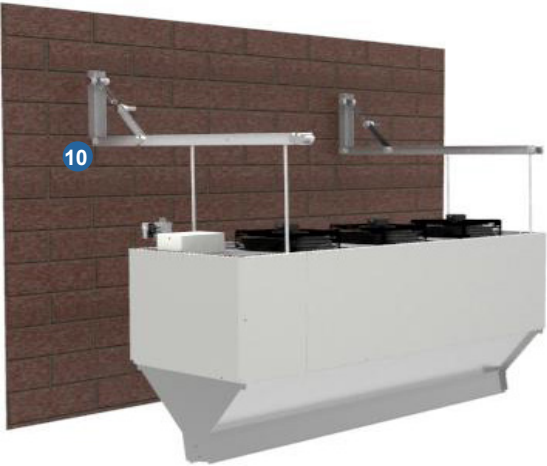
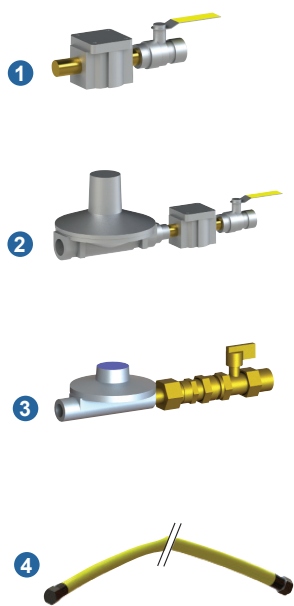
Concentric wall duct C12

Gas Air Curtain

References

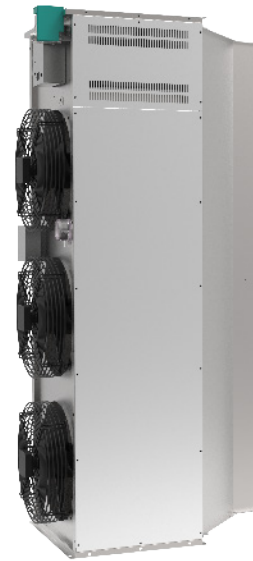
Model		FHAC 45 H	
Gas air curtain		YAC45H2.0G20 YAC45H2.0G31	
Gas air curtain, diffuser 2,5 meters		YAC45H2.5G20 YAC45H2.5G31	
Gas connection	Natural gas kit 20 or 25 mBar	1	KGN20
	Natural gas kit 300 mBar	2	KDGN55
	Propane gas kit 1,5 Bar	3	KDP55
	Flexible gas connection 3/4"	4	FLEXIND3/4
Fix.	Wall-mounting brackets*	10	COAT
Flue pipes	Sealed roof chimney B22	5	KB22100YH
	Concentric roof duct C32	6	KC32100YH
	Concentric wall duct C12	7	KC12100YH
	Single extension 1 m		LE100100
	Single extension 0,5 m		LE100050
	Single elbow 45°		CE10045
	Single elbow 90°		CE10090
Regulation	Switch disconnecter	8	BSAT4P
	Thermostat + remote reset	9	TFP1- ET85P

* Cannot be fixed directly on the unit. Threaded rods required (not supplied).





FHACV



Powerful curtain of warm air
to minimise energy losses across the door

Gas Air Curtains - FHACV series is specially designed to protect the building against uncontrolled external airflow through the doors. It helps to save energy which is used for keeping a desired temperature in the building. This series is made for vertical installation only.

Applications



Industries



Stores



Workshops

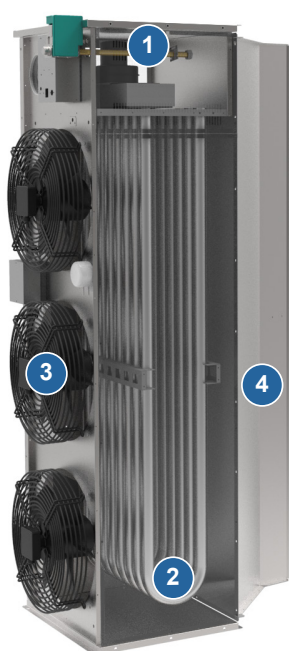


Warehouses

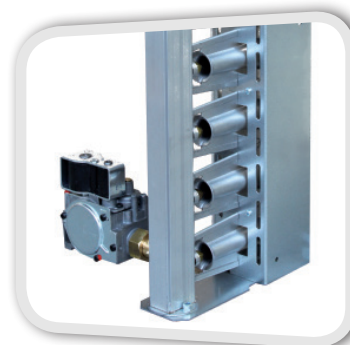
Vertical Gas Air Curtain

Gas-fired air curtain FHACV is composed of a tubular heat exchanger and a multi-jet gas burner which works with natural gas (G20/G25) or propane gas (G31). The range includes 1 model of 44 kW. And can be combined with a dedicated ambient air curtain.

Product advantages	Customer benefits
Multi-jet gas burner	Homogenous flame and temperature Not sensitive to pressure variations
1.5 mm thickness heat exchanger in aluminized steel, no welding	Efficient heat exchange Long life service
Compact device	Easy and simple assembly
Efficient air blast	Strong thermal barrier to avoid outside airflow to come inside
Pilot wire card (in standard)	Regulation of several devices by one thermostat
Heating or Ventilation	Use in summer and winter time



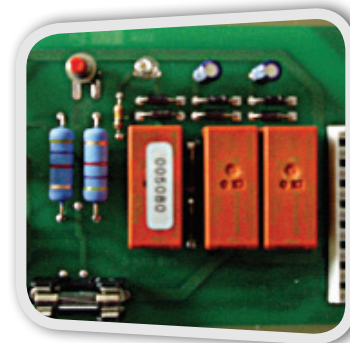
- ① Multi-jet gas burner
- ② Tubular heat exchanger
- ③ Axial fans
- ④ Diffuser



[Multi-jet gas burner]



[Tubular heat exchanger]



[Pilot wire]



[Diffuser]



Performances

Model	FHAC 45 V
Power (kW)	44
Useful power (kW)	40.5
Efficiency (%)	> 91
Air flow (m ³ /h)	10 500
Door width (m) *	2-4

* It is necessary to check and control all parameters in order to install the right air curtain on the right place.



Dimensions

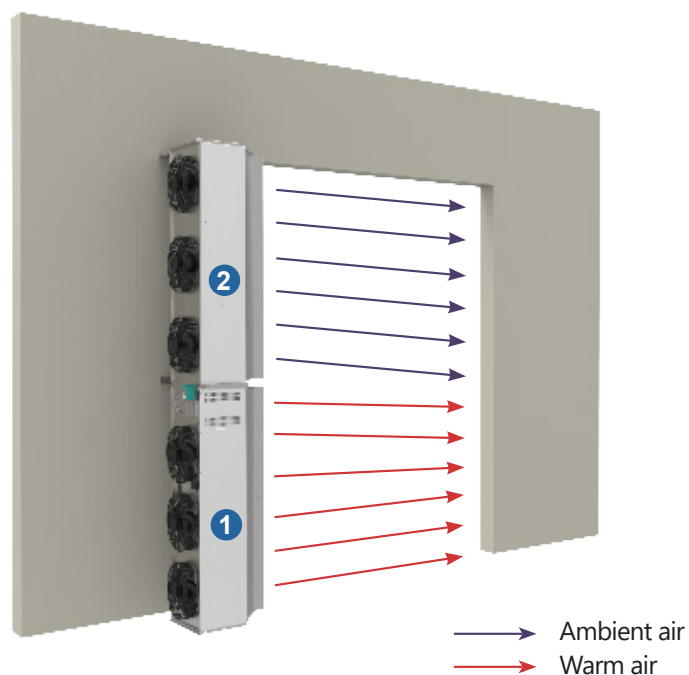
Model	FHAC 45 V
A (mm)	1 977
B (mm)	609
C (mm)	1 000
Ø Gas (mm)	3/4"
Ø Fumes (mm)	100
Ø Air (mm)	100
Weight (kg)	173

Installation

FHACV gas air curtain can be associated to an ambient air curtain if the door is higher than 2 meters.

Ambient air curtains FHAC45V1.0 and FHAC45V2.0 are specially designed to protect the upper part of the door by recirculating the air from the building.

Air curtains FHAC45V1.0 and FHAC45V2.0 work in ventilation only (no heating). It is only possible to superimpose 3 air curtains together to cover 5 meters door maximum.



Vertical Gas Air Curtain

Prices

Models		FHAC 45 V	
Gas air curtain		1	FHAC45VG20 FHAC45VG31
Ambient air curtain - 1 m			FHAC45V1.0
Ambient air curtain - 2 m		2	FHAC45V2.0
Gas connection	Natural gas kit 20 or 25 mBar	3	KG20
	Natural gas kit 300 mBar	4	KDGN55
	Propane gas kit 1,5 Bar	5	KDP55
	Flexible gas connection 3/4"	6	FLEXIND3/4
Fix.	Wall-mounting brackets	7	KYACV
Regulation	Switch disconnecter	8	BSAT4P
	Thermostat + remote reset	9	TFP1- ET85P2





FHACA



Economical solution
to protect door openings

Ambiant Air Curtain - FHACA series protects against uncontrolled incoming airflow. It helps to save energy by delivering a powerful air barrier across the entire width of the doorway.

TYPICAL APPLICATION



Industries



Supermarkets



Workshops



Warehouses

Ambient Air Curtain

Ambiant air curtain FHACA is composed of fans and an efficient diffuser. The range consists of 5 models from 1 meters to 2 meters with different fan power. FHACA is used to protect the doors from 3 to 5 meters height and can be installed horizontally or vertically.



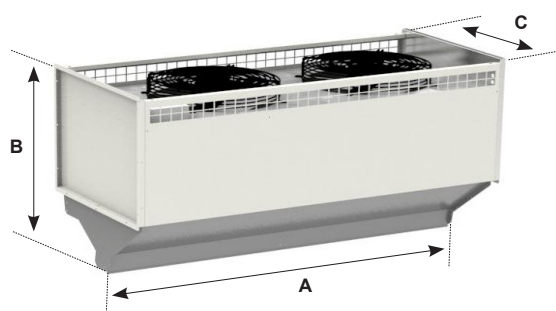
Axial fan



Diffuser

Product advantages	Customer benefits
Strong air blast	Against cold air, pollution, etc.
Compact device	Easy and simple assembly
Universal installation	Horizontal or Vertical mounting

Performances and dimensions



Models	FHAC1A	FHAC1.5A	FHAC1.5AGD	FHAC2A	FHAC2AGD
Diffusor (mm)	1 000	1 500	1 500	2 000	2 000
Air flow (m3/h)	3 300	5 500	6 500	6 500	10 000
Electrical power (W)	420	720	840	840	1 260
Max. door size (m)	4	4	4	4	5
A (mm)	995	1 495	1 495	1 995	1 995
B (mm)	772	772	772	772	772
C (mm)	580	580	580	580	580

References

Models	FHAC1A	FHAC1.5A	FHAC1.5A GD	FHAC2A	FHAC2A GD
Ambient air curtain	YAC1A	YAC1.5A	YAC1.5AGD	YAC2A	YAC2AGD
Stacking adapter for vertical mounting	KYACV				
Switch disconnecter	BSAT4P				